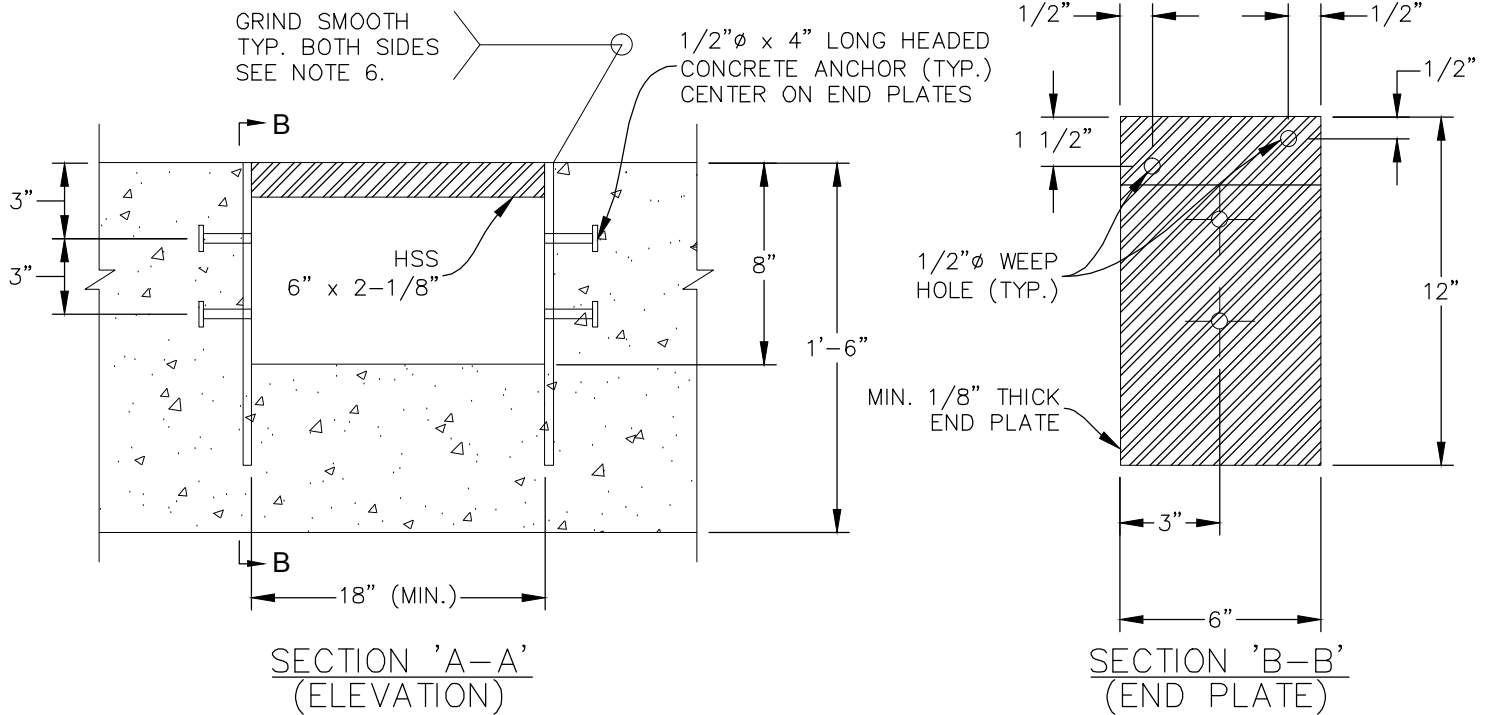
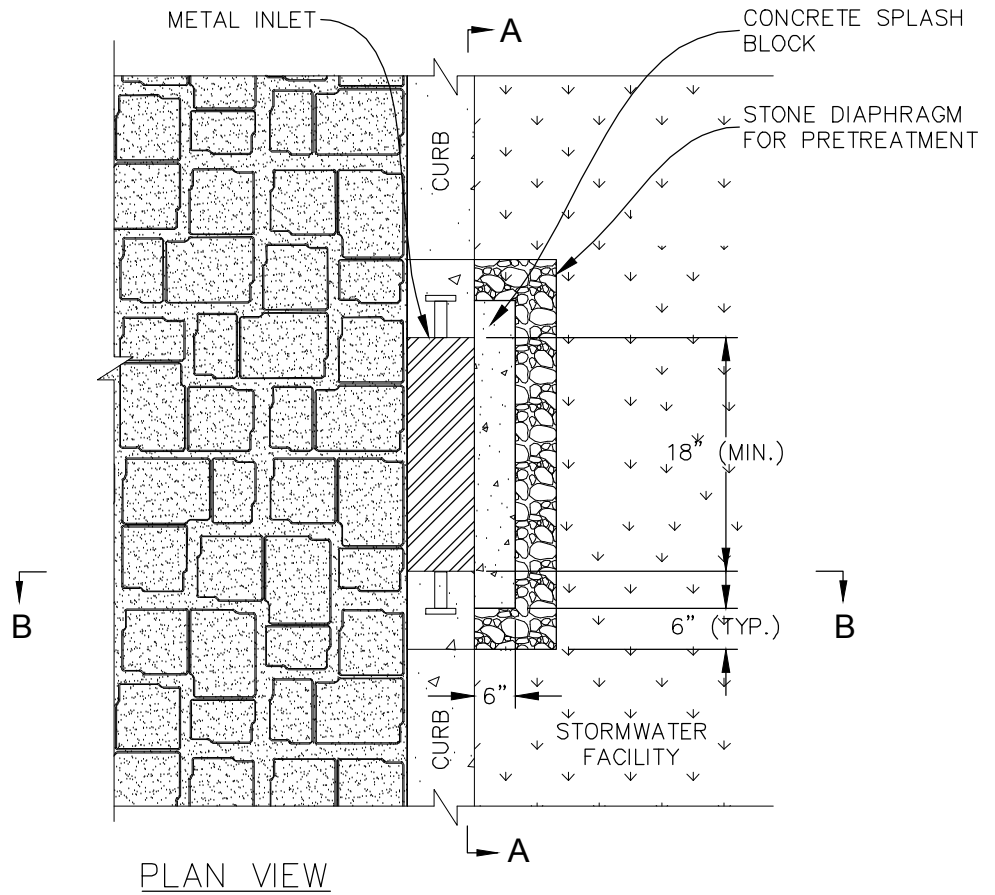


NOTES:

1. HEADED CONCRETE ANCHORS SHALL MEET THE REQUIREMENTS OF ASTM A-108.
2. HSS 6" x 2-1/8" CHANNEL SHALL MEET THE REQUIREMENTS OF ASTM A-500 GRADE B.
3. END PLATES SHALL MEET THE REQUIREMENTS OF ASTM A-36.
4. ENTIRE ASSEMBLY SHALL BE CAST IRON OR HOT DIP GALVANIZED IN ACCORDANCE WITH ASTM A-123.
5. DESIGN VERTICAL WHEEL LOAD IS 8.5 KIPS (1/2 OF TANDEM AXEL WEIGHT SPECIFIED IN FHWA-HOP-06-105).



MODIFICATIONS OF DRAWINGS ARE ONLY PERMITTED BY WRITTEN AUTHORIZATION FROM EAGLE BAY

DATE: 05-01-15

DWG: 7 OF 14